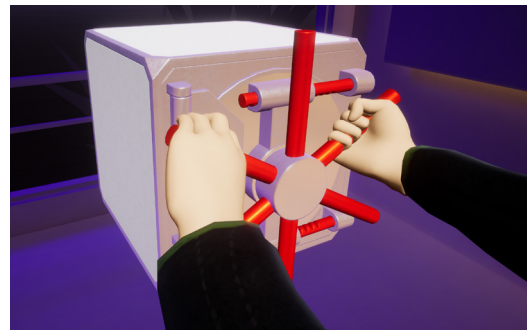


CUREO[®] 3

Virtual Therapy – Real Success

All new features of
CUREO[®] 3





Longlasting motivation thanks to gamification

Gamification has a positive influence on motivation and the success of therapy. This has been proven by studies and feedback from our patients. Additional levels, highscore modes and degrees of difficulty encourage patients to have fun and create new challenges.



Target Archery

- Targets and switchable aiming aid
- More realistic environment for more immersion
- Training of concentration, perception, upright posture and for stress management



Kite flying in Iceland

- Earn points by steering the kite through clouds
- Special challenges: thunderclouds to avoid as disruptive elements
- Promotes selective attention



Playful exercises for fine motor skills of fingers and hands

In **CUREO**® Update 3.0, additional, targeted finger exercises are available that can be used for fine motor skills. These enable an even broader spectrum of motor challenges as well as better selection and therapy of individual fingers.



ADL Cube

- Interactive therapy cube with a variety of fine motor skills exercises, both one-handed and two-handed
- Activities of daily life are simulated
- E.g.: operate a switch, press a lever or button, or turn a wheel



Hand opening and closing

- Training of opening and closing the hand alternately
- Training in dealing with interfering elements and selective perception
- Suitable for neurologically impaired patients or after hand surgery



Data synchronization and documentation of therapy use

With our new Sync tool, you can manage your patient data in a clear and consolidated manner. When using multiple systems, patient settings can be transferred quickly and easily thanks to the Sync tool. This means that every patient can be treated with every system.

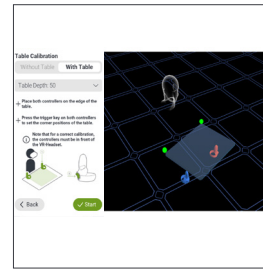


- Patient-independent use of the systems
- Flexible data exchange between systems with central back-up and and storage facility
- Documentation of therapy minutes completed or the duration of use of the modules



Quick calibration and operator facilitation

CUREO® is used daily in many clinics with a wide variety of patients. We are pleased to be able to continuously optimize our system on the basis of feedback from our users. For example, we have adapted our usability to the most frequently mentioned wishes.



- Faster, easier to adjust, reliable calibration, also in the patient bed
- With just a few clicks, e.g., to determine the size of the therapy table; more time is left for therapy
- In mirror therapy: unused hand is hidden to focus more attention on the mirrored hand



Increased data security



- Progress data and therapy progress are stored securely and reliably stored; they are easily accessible for accessible
- 256-bit encryption of all data (AES-256_CBC)



Multilingual system



- New languages: Finnish, Swedish, Arabic, Slovenian, Spanish
- Operating language of the tablet and the language of instructions for patients can be set independently of each other
- Enables therapy of people of different nationalities

CUREOSITY

CUREO® is already being used here, among other things:



CUREosity GmbH

Burgunderstr. 27 • 40549 Düsseldorf • info@cureosity.de • +49 211 82 20 46 6 • www.cureosity.de



For more insights, visit our YouTube channel!

